

SUBSTRATE: MASONRY

INSULATION: MINERAL WOOL

CLADDING: —

DATE:

GREENGIRT CMH SIZE: 2"

GIRT ORIENTATION: HORIZONTAL

BASE AT ROOF

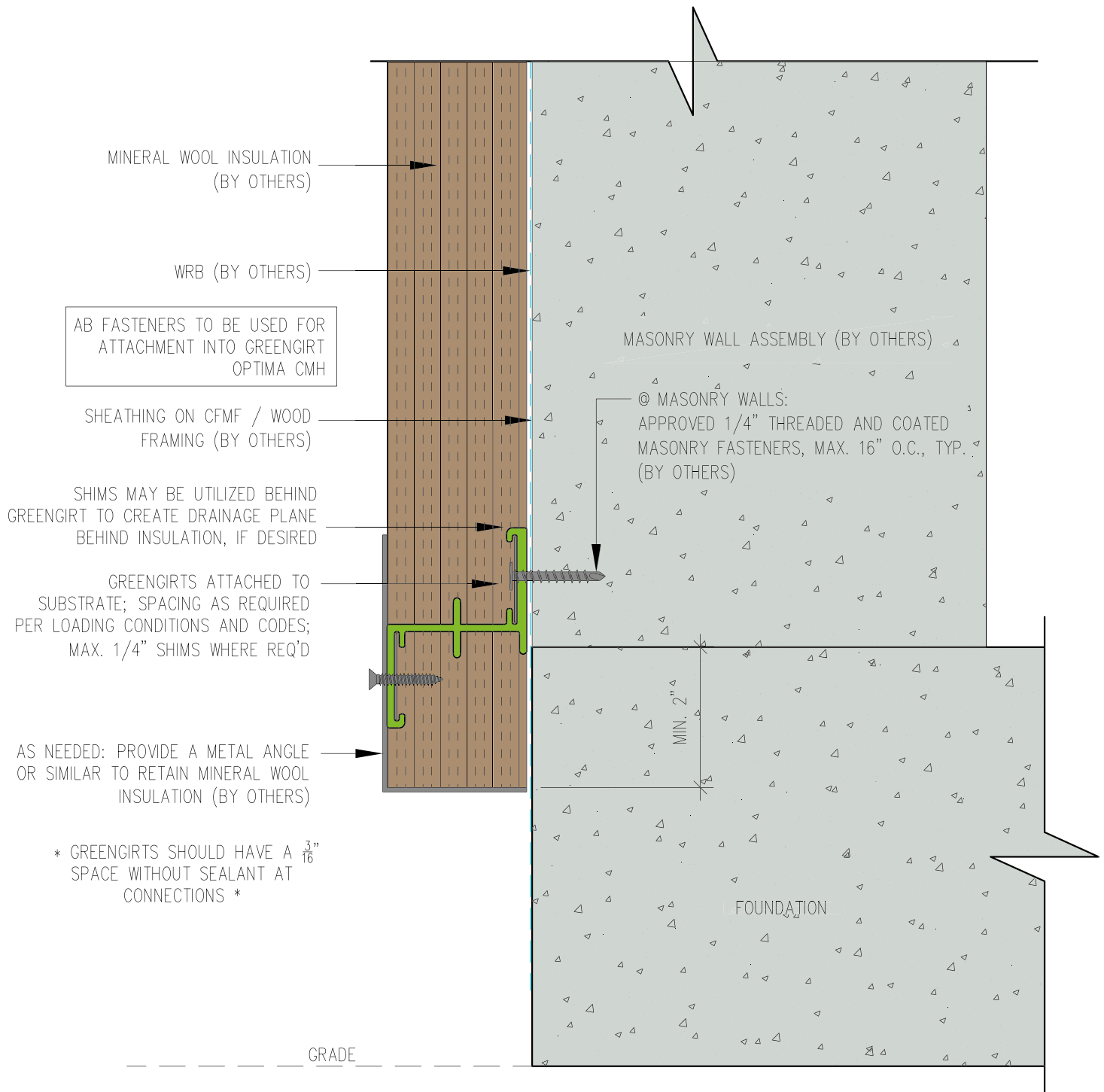
NOT TO SCALE

GG10

GreenGirt Optima CMH™

GreenGirt.com

(269) 355-1818



GreenGirt Optima CMH™

GreenGirt.com

(269) 355-1818

SUBSTRATE: MASONRY

CLADDING: —

GREENGIRT CMH SIZE: 2"

INSULATION: MINERAL WOOL

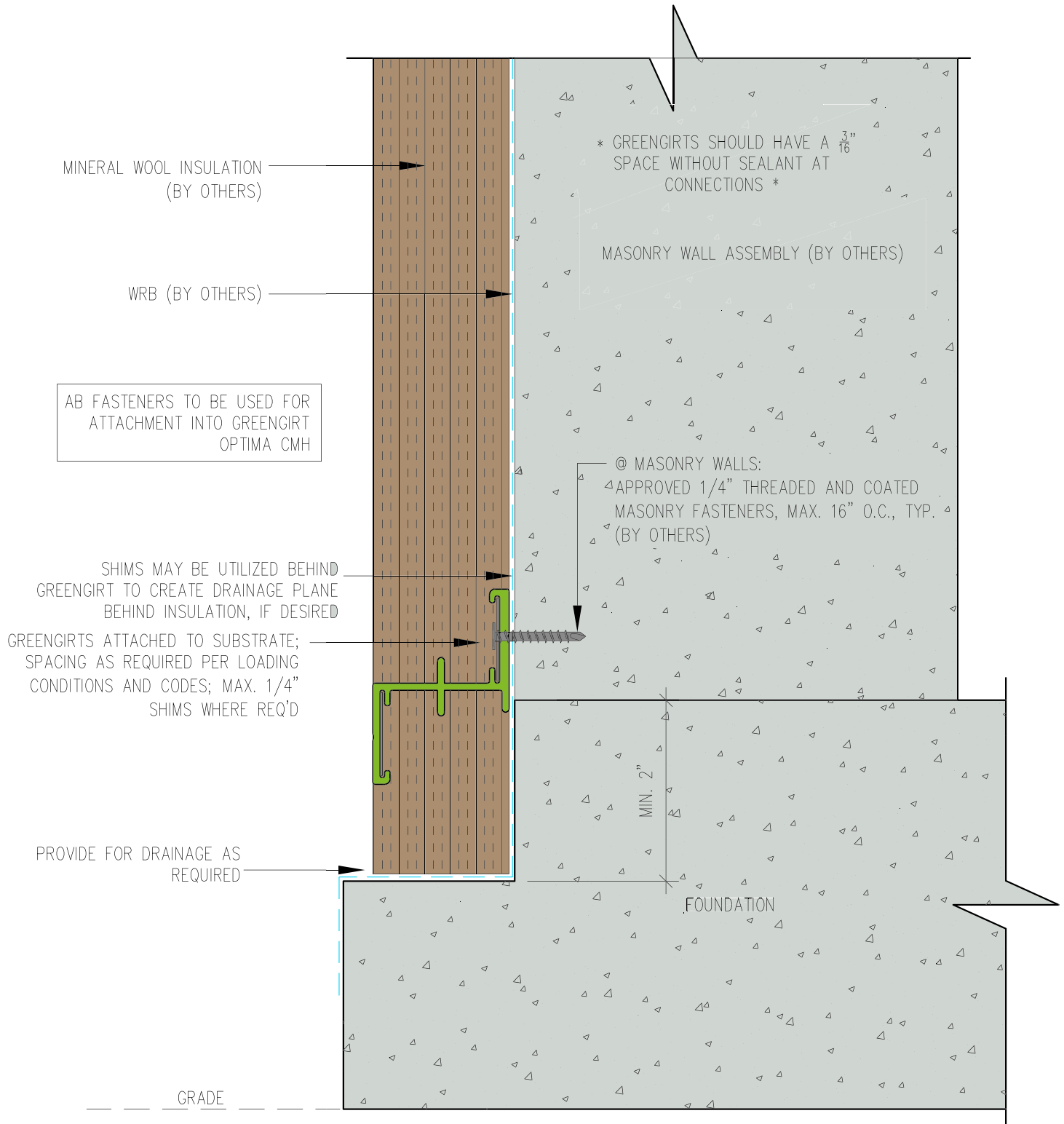
DATE:

GIRT ORIENTATION: HORIZONTAL

FOUNDATION FLUSH DETAIL

NOT TO SCALE

GG4



GreenGirt Optima CMH™

GreenGirt.com

(269) 355-1818

SUBSTRATE: MASONRY

CLADDING: —

GREENGIRT CMH SIZE: 2"

INSULATION: MINERAL WOOL

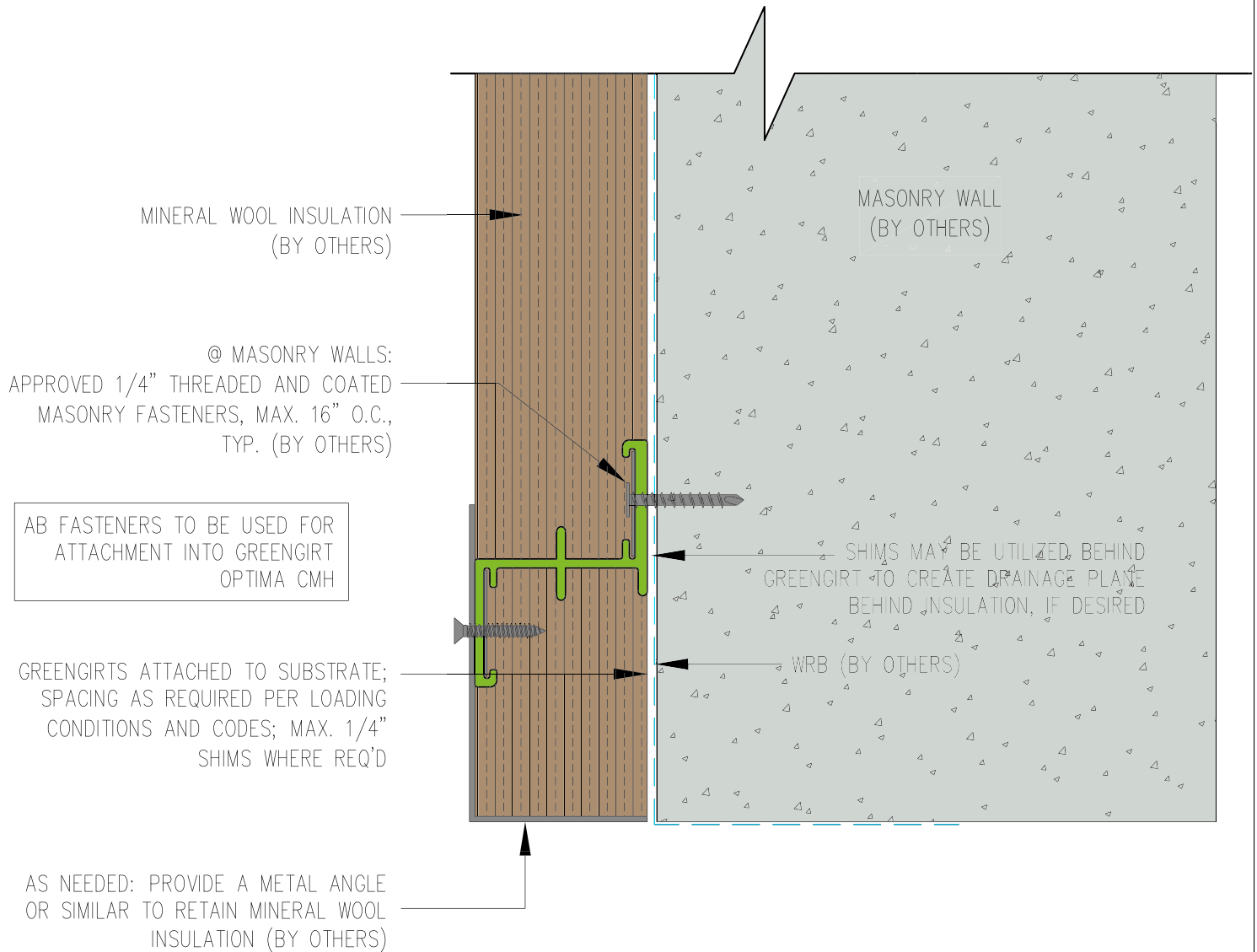
DATE:

GIRT ORIENTATION: HORIZONTAL

FOUNDATION NOTCH DETAIL

NOT TO SCALE

GG3



GreenGirt Optima CMH™

GreenGirt.com

(269) 355-1818

SUBSTRATE: MASONRY

CLADDING: -

GREENGIRT CMH SIZE: 2"

INSULATION: MINERAL WOOL

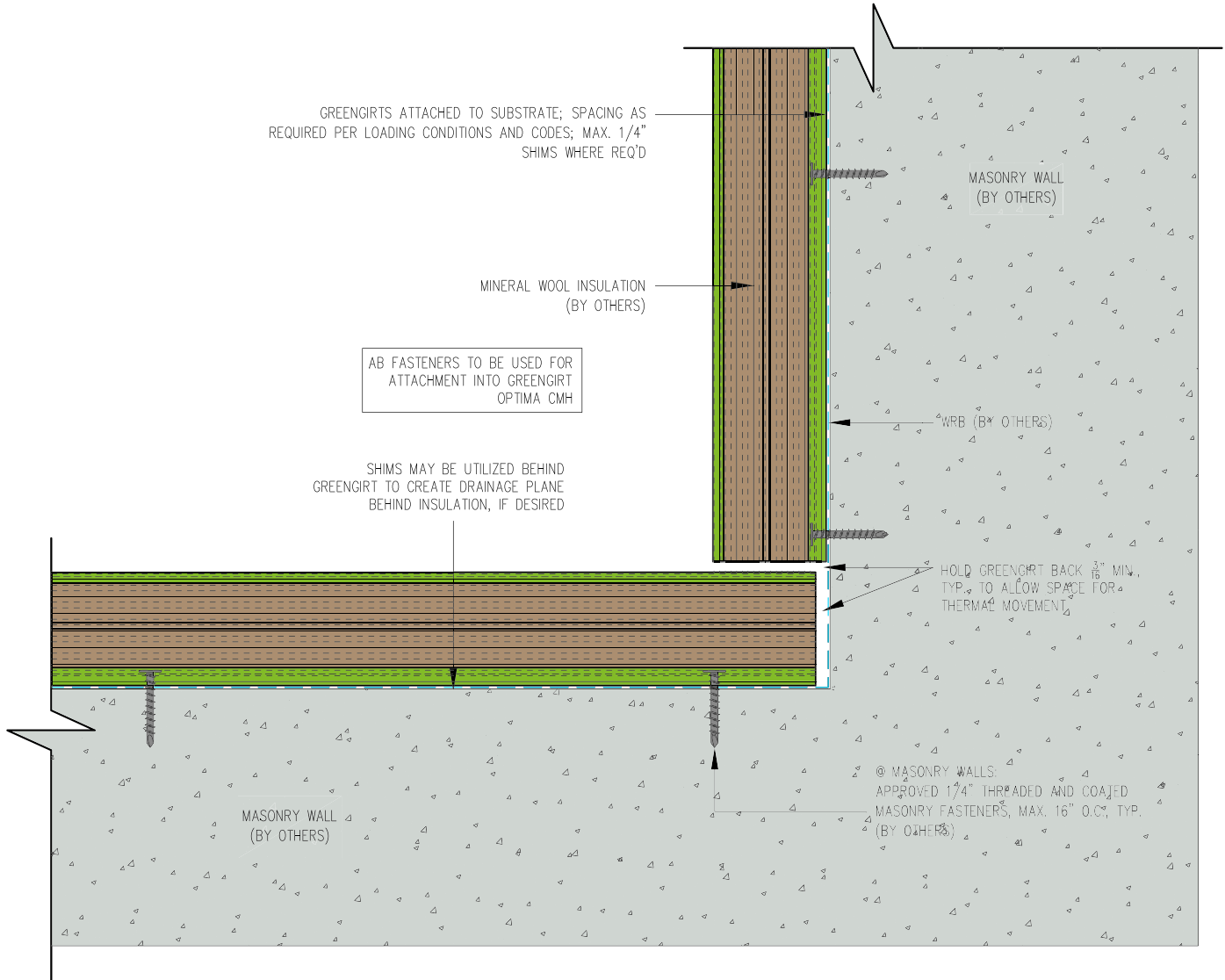
DATE: 10-24-2016

GIRT ORIENTATION: HORIZONTAL

HEADER DETAIL

NOT TO SCALE

GG7



GreenGirt Optima CMH™

GreenGirt.com

(269) 355-1818

SUBSTRATE: MASONRY

CLADDING: —

GREENGIRT CMH SIZE: 2"

INSULATION: MINERAL WOOL

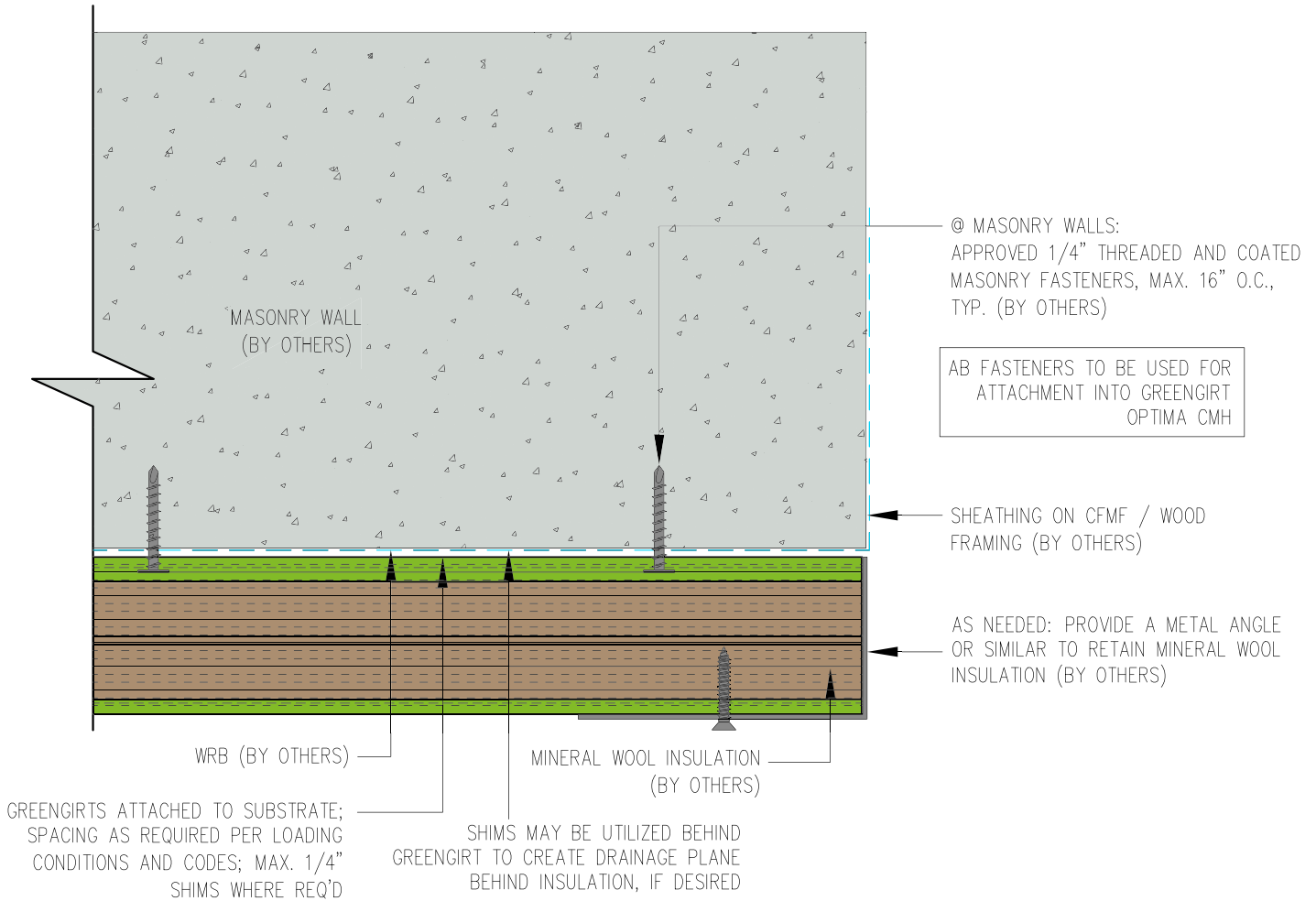
DATE:

GIRT ORIENTATION: HORIZONTAL

INSIDE CORNER DETAIL

NOT TO SCALE

GG5



GreerGirt Optima CMH™

GreenGirt.com

(269) 355-1818

SUBSTRATE: MASONRY

INSULATION: MINERAL WOOL

CLADDING: —

DATE:

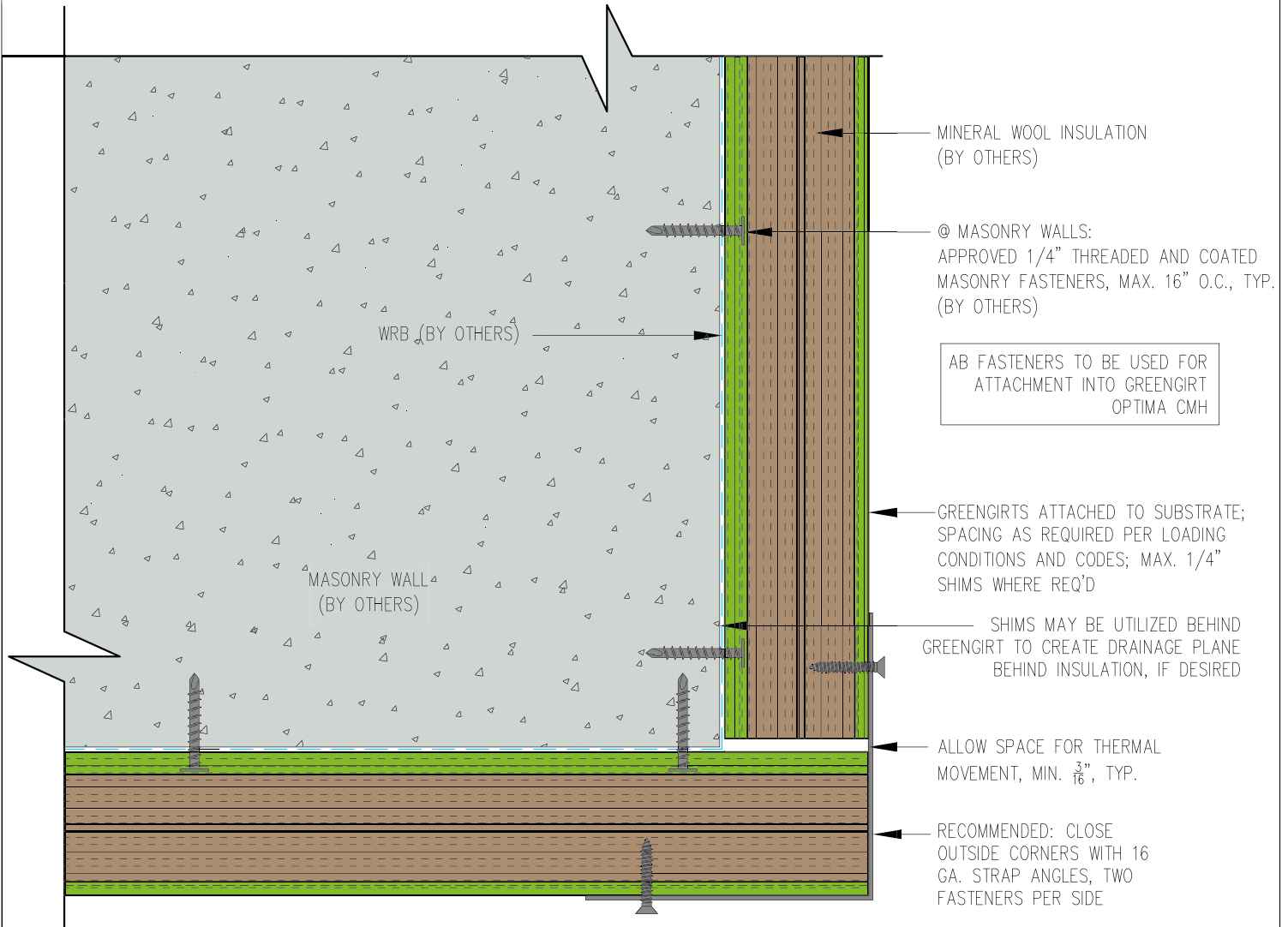
GREENGIRT CMH SIZE: 2"

GIRT ORIENTATION: HORIZONTAL

JAMB DETAIL

NOT TO SCALE

GG8



SUBSTRATE: MASONRY

INSULATION: MINERAL WOOL

CLADDING: —

DATE:

GREENGIRT CMH SIZE: 2"

GIRT ORIENTATION: HORIZONTAL

OUTSIDE CORNER DETAIL

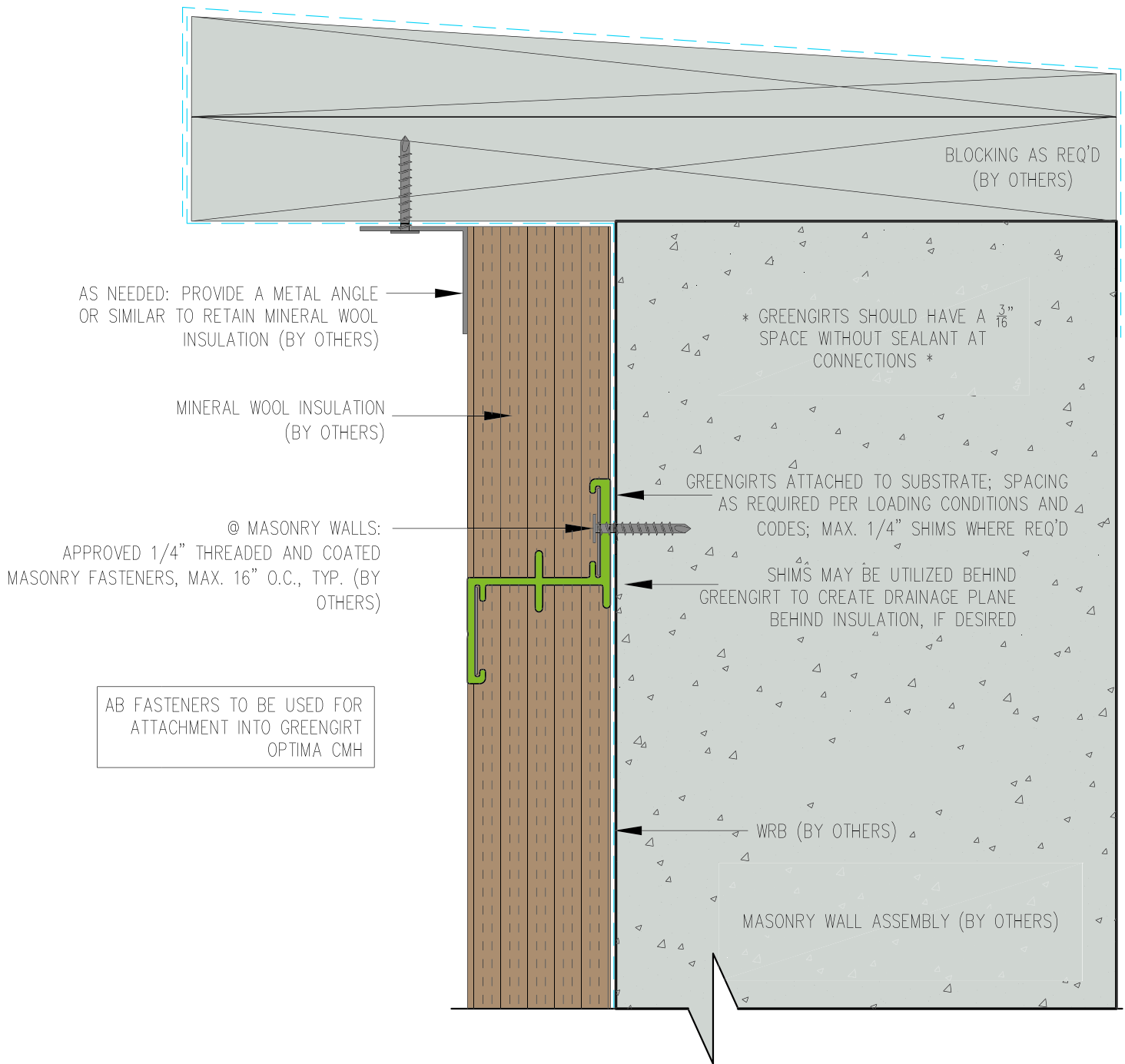
NOT TO SCALE

GG6

GreenGirt Optima CMH™

GreenGirt.com

(269) 355-1818



GreenGirt Optima CMH™

GreenGirt.com

(269) 355-1818

SUBSTRATE: MASONRY

CLADDING: -

GREENGIRT CMH SIZE: 2"

INSULATION: MINERAL WOOL

DATE:

GIRT ORIENTATION: HORIZONTAL

PARAPET DETAIL

NOT TO SCALE

GG2

AS NEEDED: PROVIDE A METAL ANGLE OR SIMILAR TO RETAIN MINERAL WOOL INSULATION (BY OTHERS)

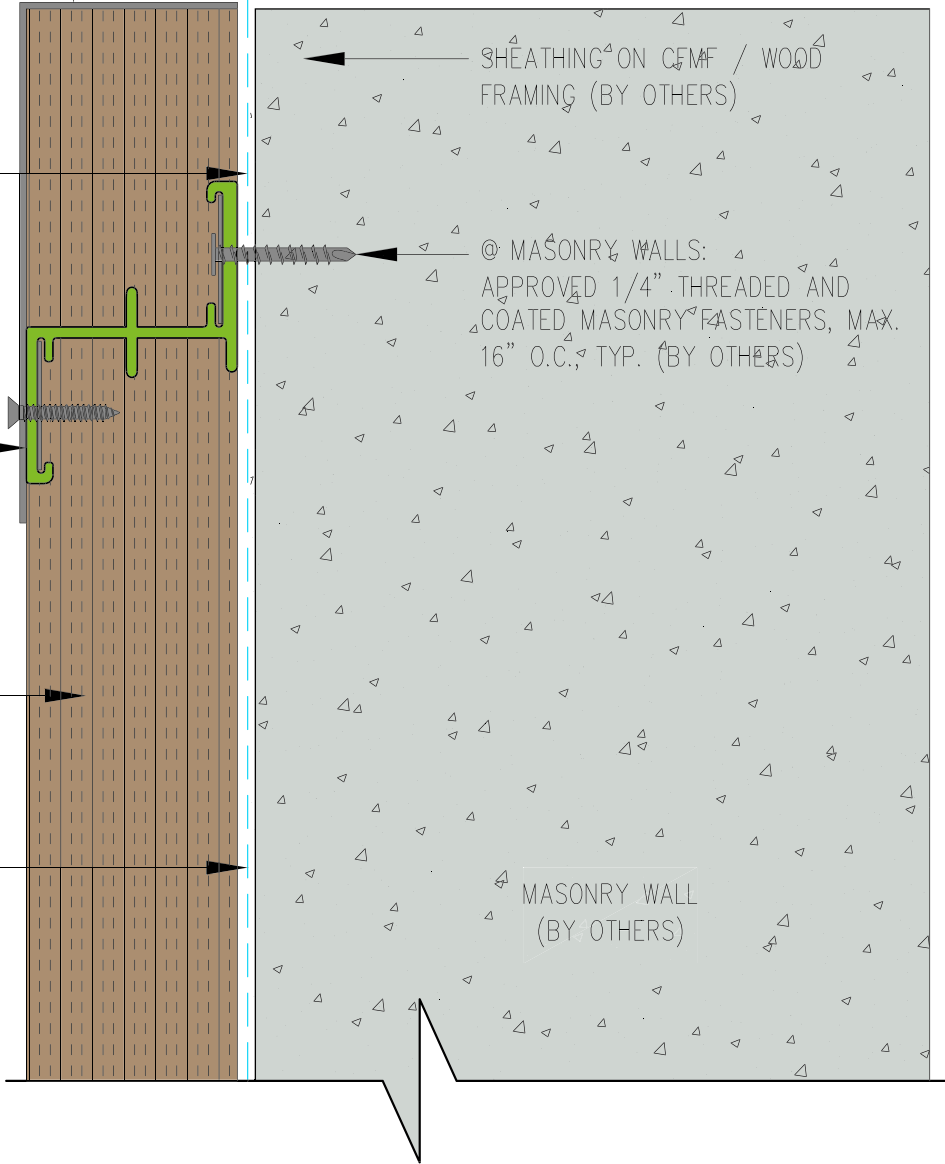
SHIMS MAY BE UTILIZED BEHIND GREENGIRT TO CREATE DRAINAGE PLANE BEHIND INSULATION, IF DESIRED

GREENGIRTS ATTACHED TO SUBSTRATE; SPACING AS REQUIRED PER LOADING CONDITIONS AND CODES; MAX. 1/4" SHIMS WHERE REQ'D

MINERAL WOOL INSULATION (BY OTHERS)

WRB (BY OTHERS)

AB FASTENERS TO BE USED FOR ATTACHMENT INTO GREENGIRT OPTIMA CMH



SUBSTRATE: MASONRY

INSULATION: MINERAL WOOL

CLADDING: -

DATE:

GREENGIRT CMH SIZE: 2"

GIRT ORIENTATION: HORIZONTAL

GreenGirt Optima CMH™

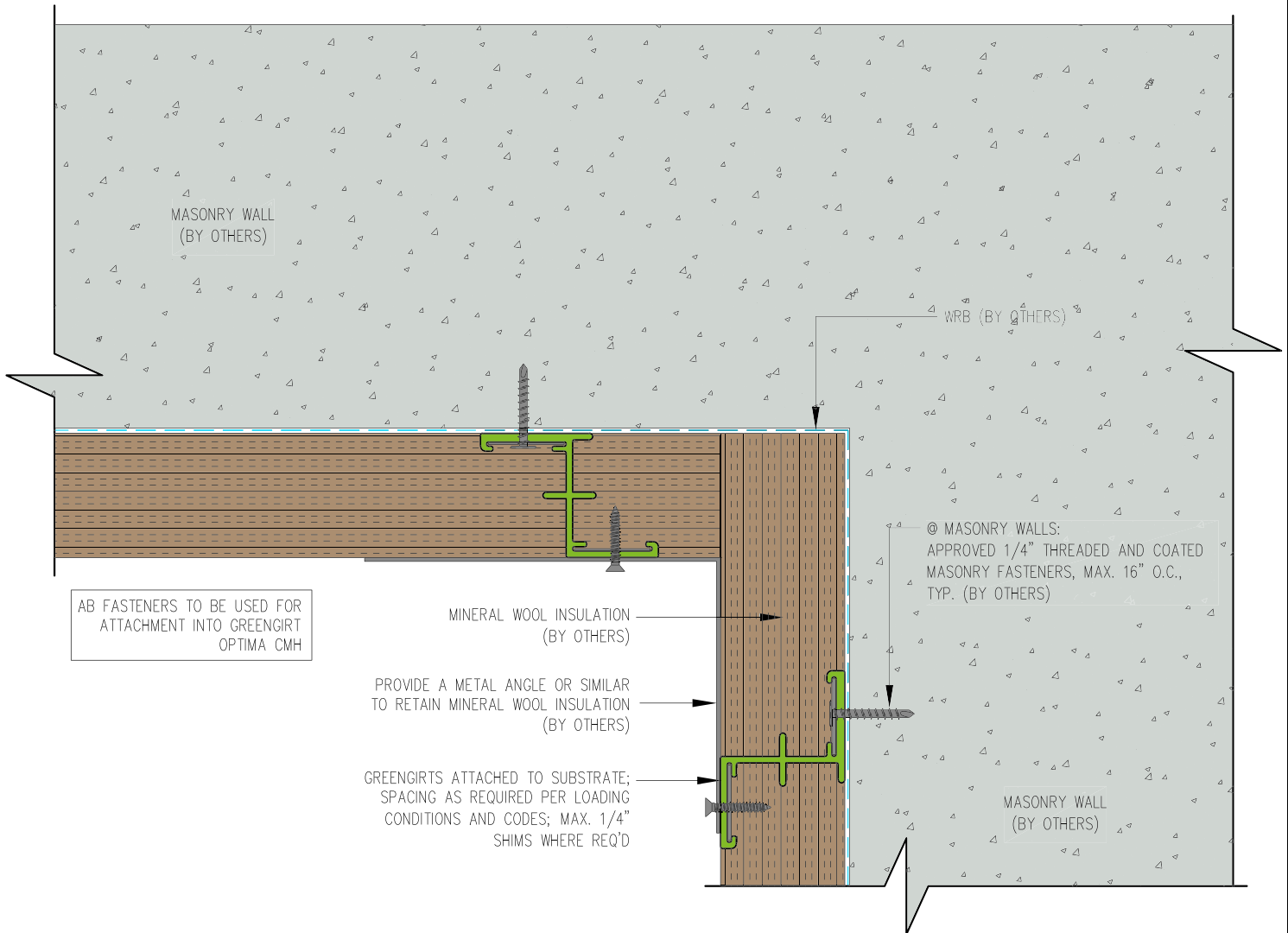
GreenGirt.com

(269) 355-1818

SILL DETAIL

NOT TO SCALE

GG9



GreenGirt Optima CMH™

GreenGirt.com

(269) 355-1818

SUBSTRATE: MASONRY

CLADDING: —

GREENGIRT CMH SIZE: 2"

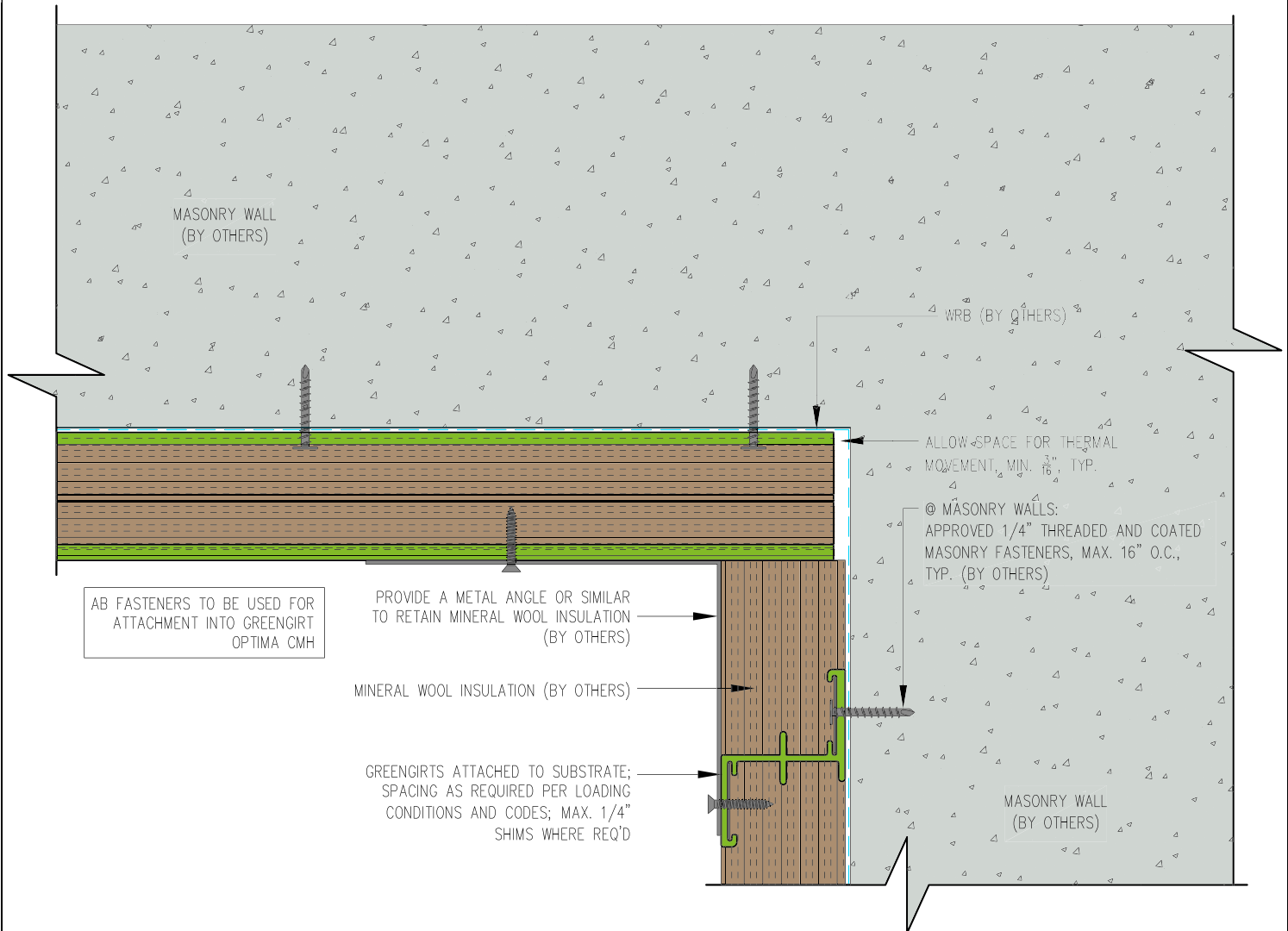
INSULATION: MINERAL WOOL

DATE:

GIRT ORIENTATION: HORIZONTAL

SOFFIT INSIDE DETAIL—1

NOT TO SCALE



GreenGirt Optima CMH™

GreenGirt.com

(269) 355-1818

SUBSTRATE: MASONRY

INSULATION: MINERAL WOOL

CLADDING: —

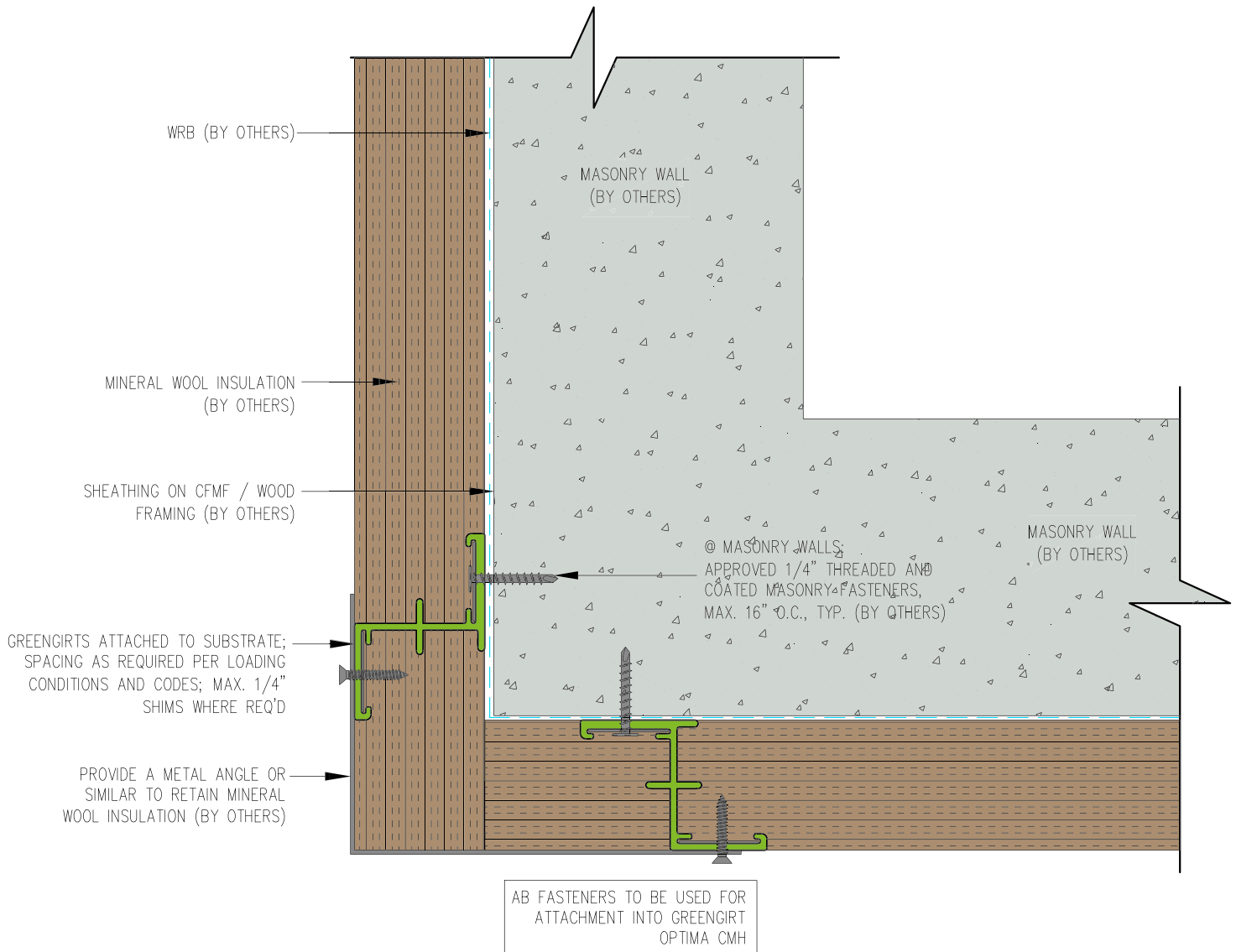
DATE:

GREENGIRT CMH SIZE: 2"

GIRT ORIENTATION: HORIZONTAL

SOFFIT INSIDE DETAIL-2

NOT TO SCALE



GreenGirt Optima CMH™

GreenGirt.com

(269) 355-1818

SUBSTRATE: MASONRY

CLADDING: —

GREENGIRT CMH SIZE: 2"

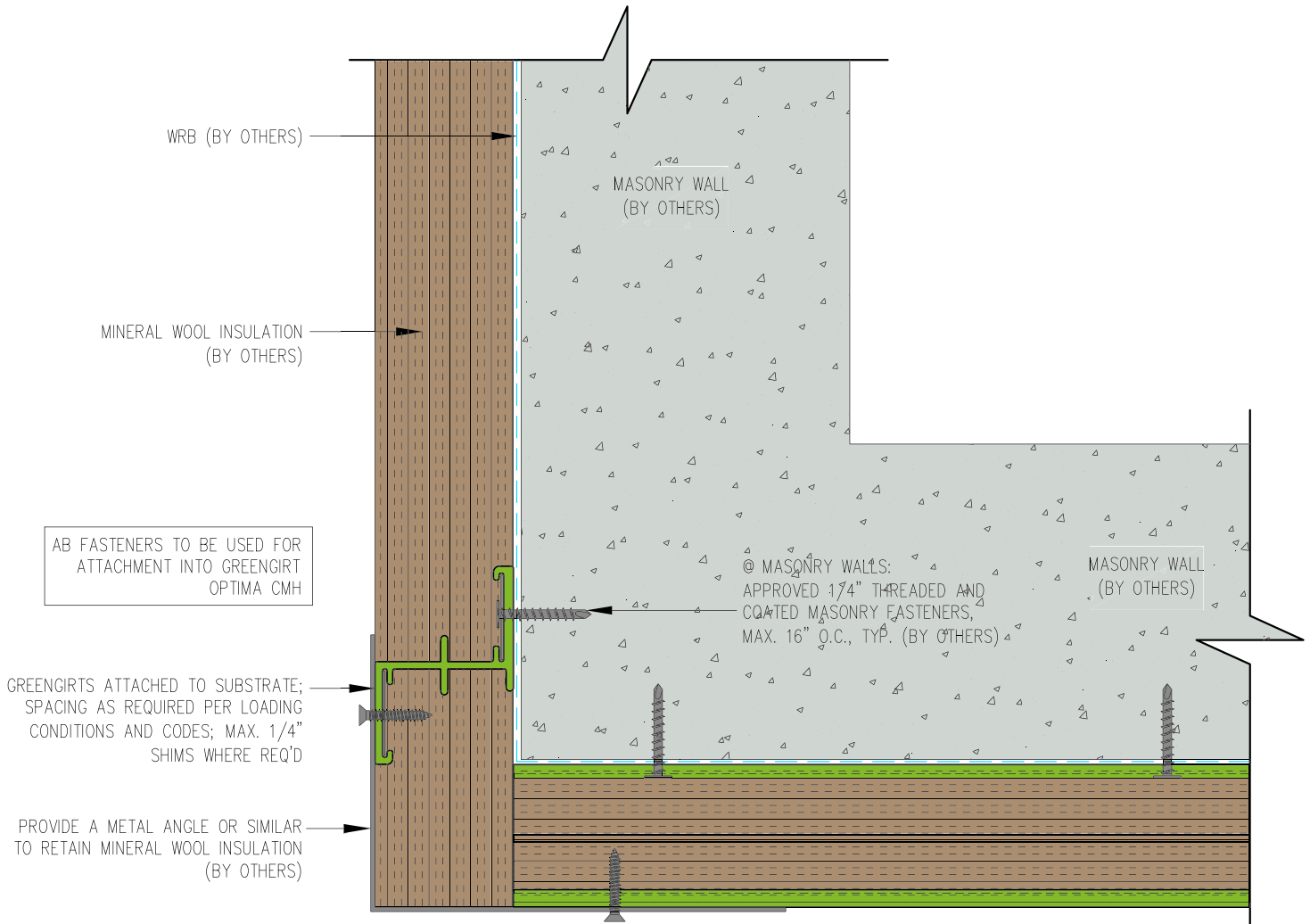
INSULATION: MINERAL WOOL

DATE:

GIRT ORIENTATION: HORIZONTAL

SOFFIT OUTSIDE DETAIL-1

NOT TO SCALE



SUBSTRATE: MASONRY

INSULATION: MINERAL WOOL

CLADDING: -

DATE:

GREENGIRT CMH SIZE: 2"

GIRT ORIENTATION: HORIZONTAL

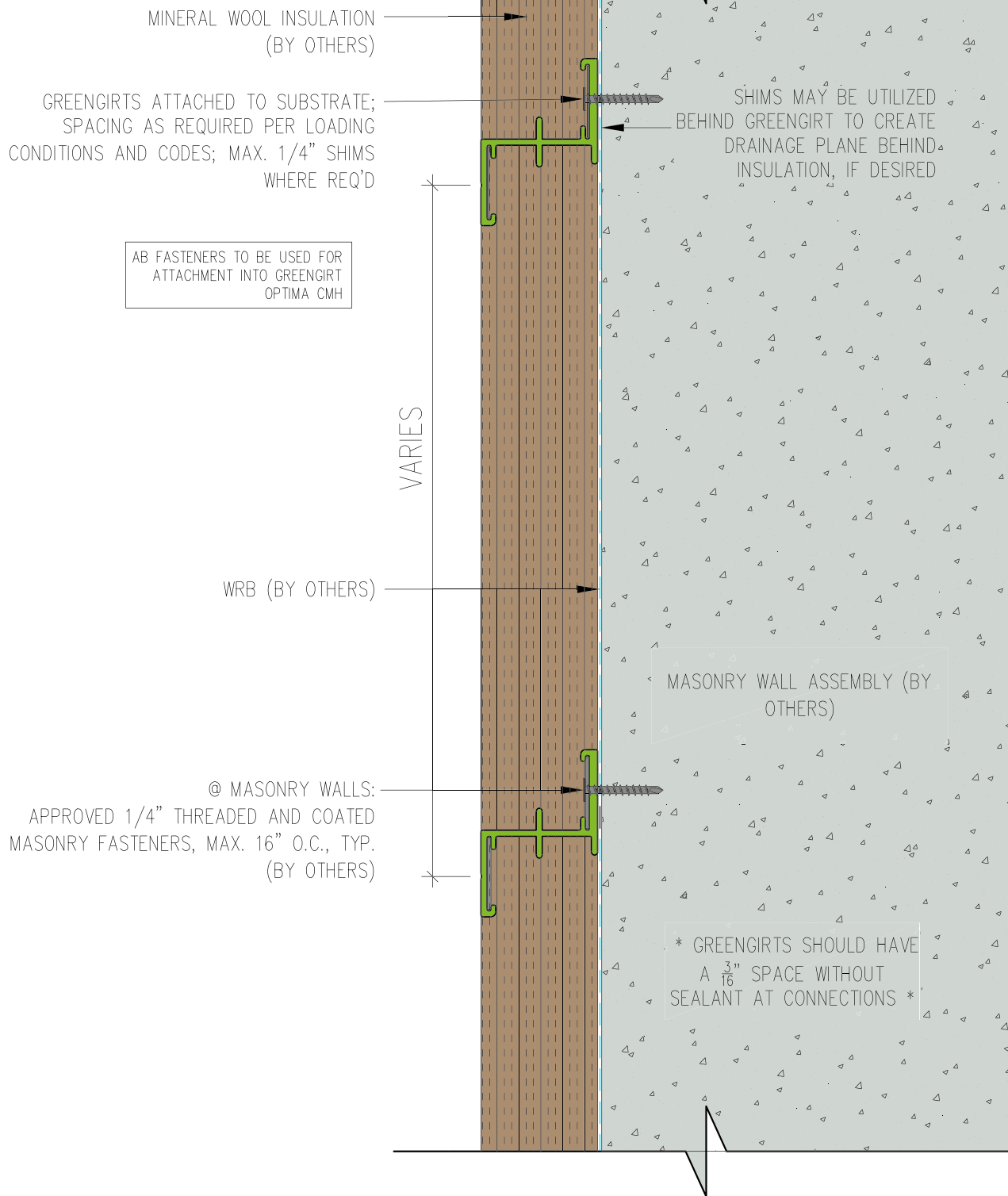
GreenGirt Optima CMH™

SOFFIT OUTSIDE DETAIL-2

GreenGirt.com

(269) 355-1818

NOT TO SCALE



SUBSTRATE: MASONRY

INSULATION: MINERAL WOOL

CLADDING: —

DATE:

GREENGIRT CMH SIZE: 2"

GIRT ORIENTATION: HORIZONTAL

GreenGirt Optima CMH™

WALL SECTION

GreenGirt.com

(269) 355-1818

NOT TO SCALE

GG1